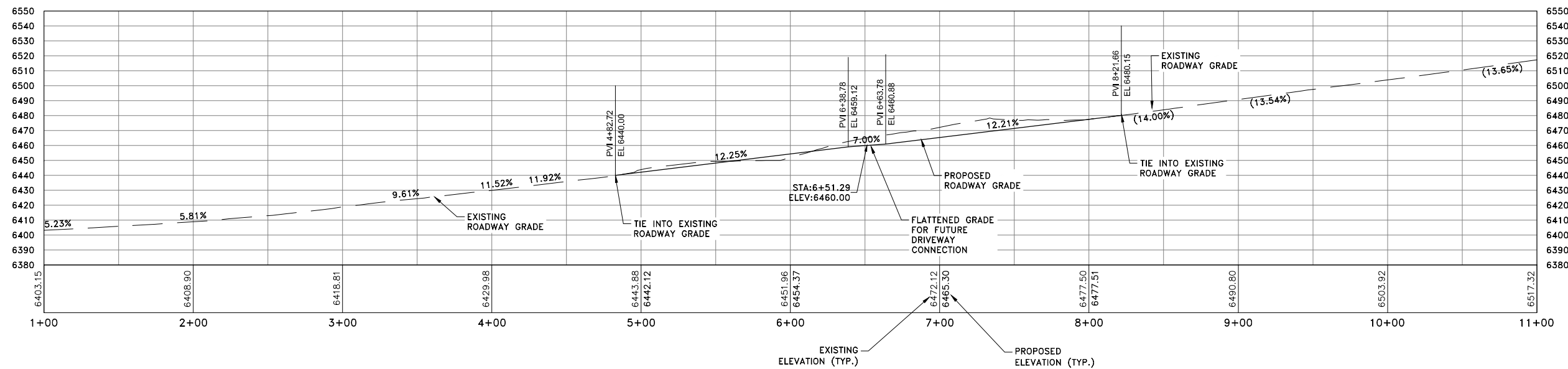


LAKEVIEW TO STATELINE CONNECTOR PLAN VIEW



LAKEVIEW TO STATELINE CONNECTOR PROFILE VIEW

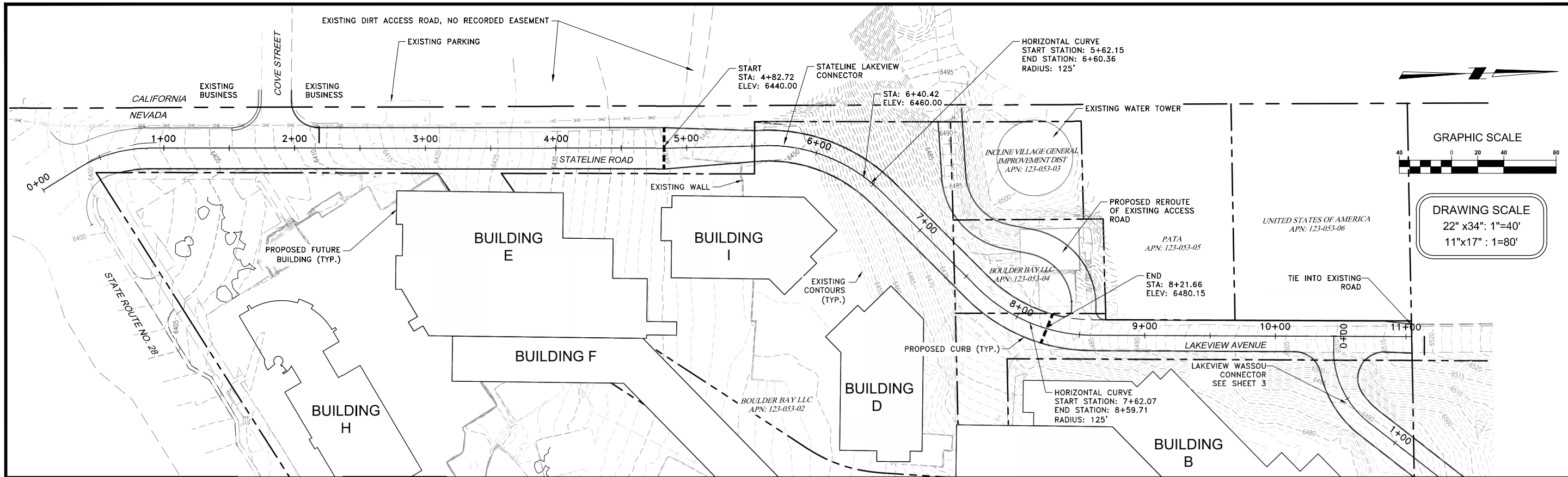
HORIZONTAL: 1" = 40' VERTICAL: 1" = 40'

- NOTES:
 1) REFERENCE PROPOSED ROADWAY WIDTHS EXHIBIT FOR ROAD SECTIONS.

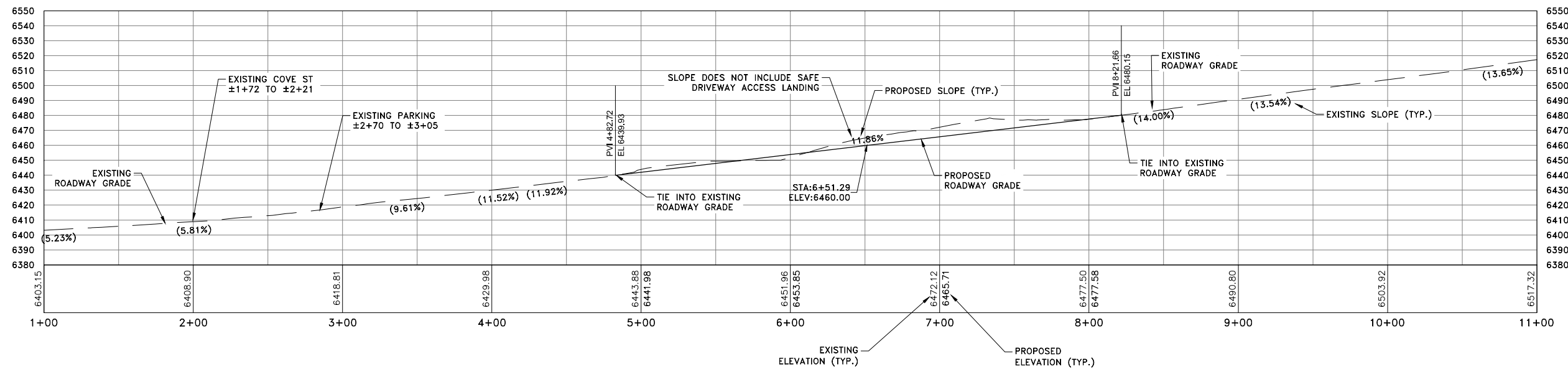
ALTERNATIVE I - FOR DISCUSSION PURPOSES ONLY - REQUESTED BY WASHOE COUNTY
 PRIOR SUBMITTAL, INCORPORATES A DRIVEWAY LANDING

**PRELIMINARY
 (NOT FOR CONSTRUCTION)**

BY	
REVISIONS	
MARK	
DATE	
PRELIMINARY NOT FOR CONSTRUCTION	
	
BOULDER BAY ALTERNATIVE 1 LAKEVIEW-STATELINE CONNECTOR- AMENDED PLAN & PROFILE	
NEVADA	
WASHOE COUNTY	
JOB NO.	17042.07
DESIGNED BY	CJ
CHECKED BY	MKS
DATE	4/9/2021
SHEET	1
4	



LAKEVIEW TO STATELINE CONNECTOR PLAN VIEW



LAKEVIEW TO STATELINE CONNECTOR PROFILE VIEW

HORIZONTAL: 1" = 40' VERTICAL: 1" = 40'

NOTES:

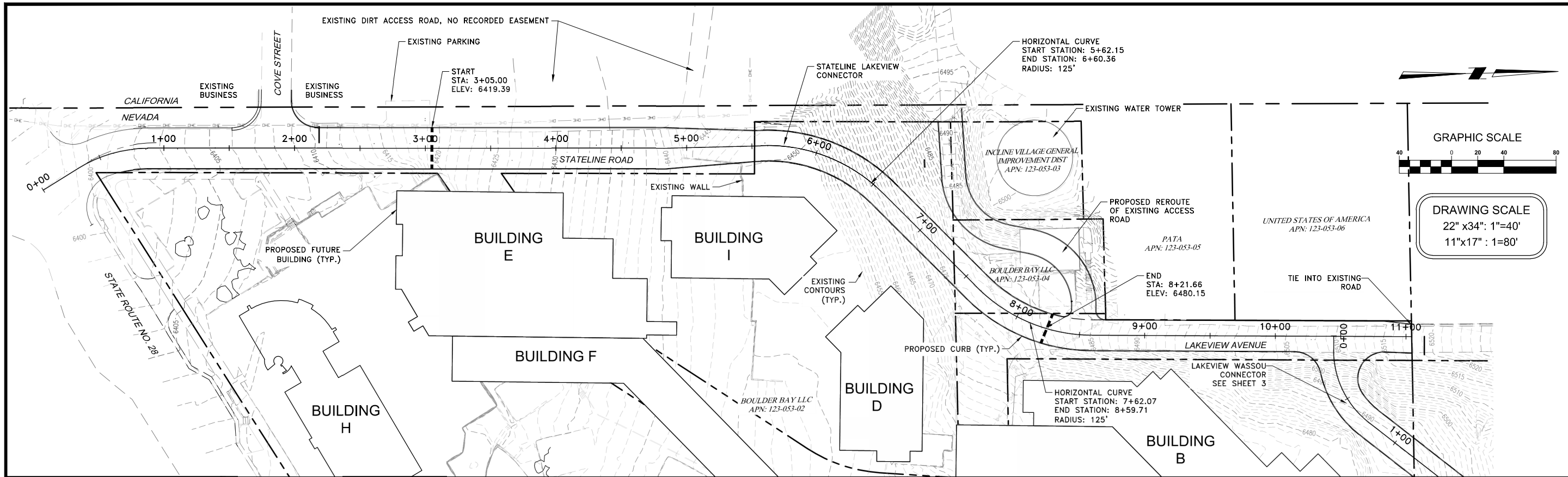
- 1) REFERENCE PROPOSED ROADWAY WIDTHS EXHIBIT FOR ROAD SECTIONS.

ALTERNATIVE II - FOR DISCUSSION PURPOSES ONLY - REQUESTED BY WASHOE COUNTY

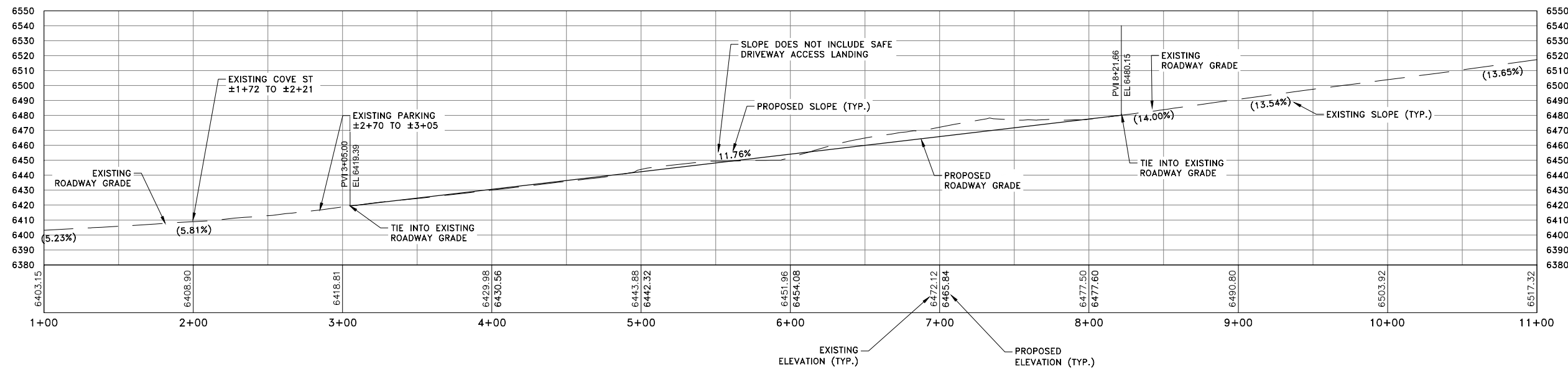
ENDS NEW ROADWAY IMPROVEMENTS FURTHER SOUTH

**PRELIMINARY
(NOT FOR CONSTRUCTION)**

BY	
REVISIONS	
MARK	
DATE	
PRELIMINARY NOT FOR CONSTRUCTION	
BOULDER BAY ALTERNATIVE 2 LAKEVIEW-STATELINE CONNECTOR - AMENDED PLAN & PROFILE	
NEVADA	
WASHOE COUNTY	
JOB NO.	17042.07
DESIGNED BY	CJ
CHECKED BY	MKS
DATE	4/9/2021
SHEET	2
OF	4



LAKEVIEW TO STATELINE CONNECTOR PLAN VIEW



LAKEVIEW TO STATELINE CONNECTOR PROFILE VIEW

HORIZONTAL: 1" = 40' VERTICAL: 1" = 40'

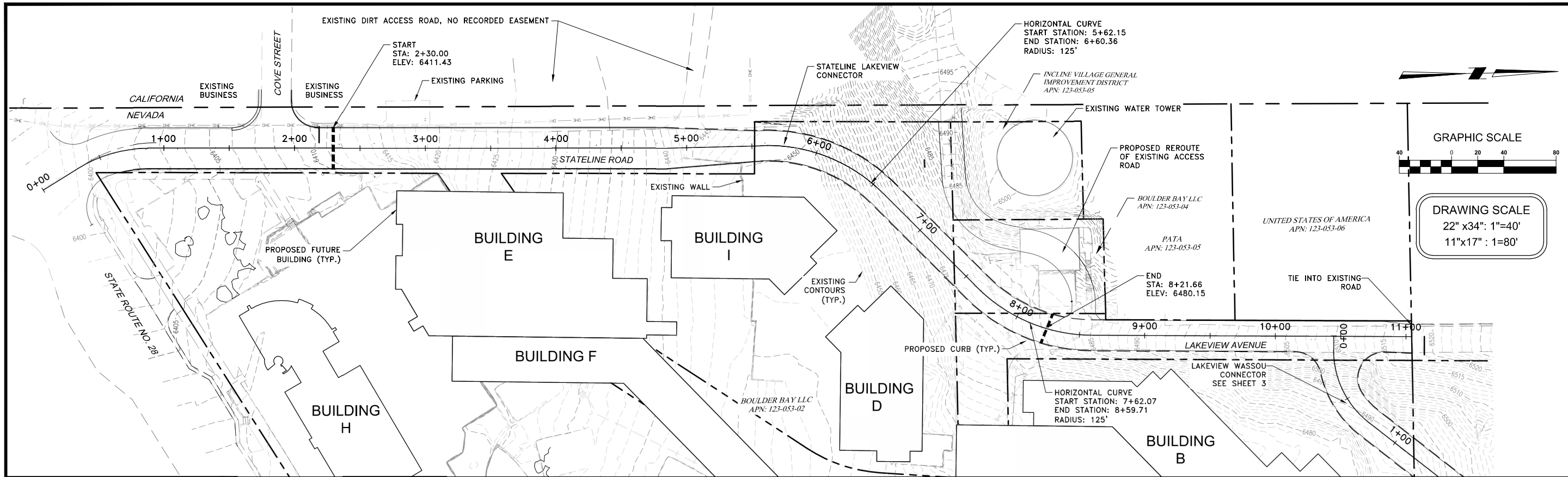
- NOTES:
- 1) REFERENCE PROPOSED ROADWAY WIDTHS EXHIBIT FOR ROAD SECTIONS.

ALTERNATIVE III - FOR DISCUSSION PURPOSES ONLY - REQUESTED BY WASHOE COUNTY

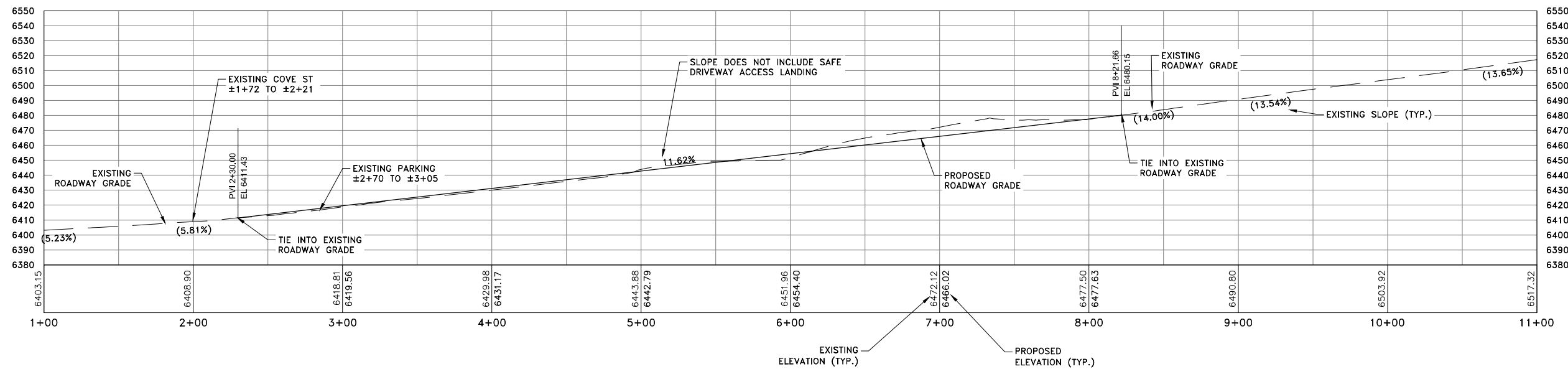
ROADWAY IMPROVEMENTS AS SHOWN IN THIS ALTERNATIVE EXTEND ±178 FEET SOUTH ALONG STATELINE ROAD AS COMPARED TO THE INITIAL SUBMITTED PROFILE WITH THE ABANDONMENT APPLICATION. BEGINS TO IMPACT COMMERCIAL PROPERTIES AT COVE STREET INTERSECTION.

**PRELIMINARY
(NOT FOR CONSTRUCTION)**

BY	
REVISIONS	
MARK	
DATE	
PRELIMINARY NOT FOR CONSTRUCTION	
<p>CFA, INC. LAND SURVEYORS CIVIL ENGINEERS LAND USE PLANNERS 1150 CORPORATE BOULEVARD - RENO, NEVADA 89502 775-856-1150 FAX - 775-856-1160 FAX - CFARENDO.COM</p>	
<p>BOULDER BAY ALTERNATIVE 3 LAKEVIEW-STATELINE CONNECTOR- AMENDED PLAN & PROFILE</p>	
NEVADA WASHOE COUNTY	
JOB NO.	17042.07
DESIGNED BY	CJ
CHECKED BY	MKS
DATE	4/9/2021
SHEET	3
OF	4



LAKEVIEW TO STATELINE CONNECTOR PLAN VIEW



LAKEVIEW TO STATELINE CONNECTOR PROFILE VIEW

HORIZONTAL: 1" = 40' VERTICAL: 1" = 40'

NOTES:

- 1) REFERENCE PROPOSED ROADWAY WIDTHS EXHIBIT FOR ROAD SECTIONS.

ALTERNATIVE IV - FOR DISCUSSION PURPOSES ONLY - REQUESTED BY WASHOE COUNTY

ROADWAY IMPROVEMENTS AS SHOWN IN THIS ALTERNATIVE EXTEND ±253 FEET SOUTH ALONG STATELINE ROAD AS COMPARED TO THE INITIAL SUBMITTED PROFILE WITH THE ABANDONMENT APPLICATION. PRESENTS IMPACT TO PARKING SPACES AND COMMERCIAL USE AT NORTHWEST CORNER OF COVE STREET AND STATELINE.

**PRELIMINARY
(NOT FOR CONSTRUCTION)**

BY	
REVISIONS	
MARK	
DATE	
PRELIMINARY NOT FOR CONSTRUCTION	
BOULDER BAY ALTERNATIVE 4 LAKEVIEW-STATELINE CONNECTOR- AMENDED PLAN & PROFILE	
NEVADA WASHOE COUNTY	
JOB NO.	17042.07
DESIGNED BY	CJ
CHECKED BY	MKS
DATE	4/9/2021
SHEET	4
OF	4